

FDE Code

brief format for the
immunophenotype summaries

Complexity of flow cytometry: **data**

From:

2 colors



6 colors



10 colors

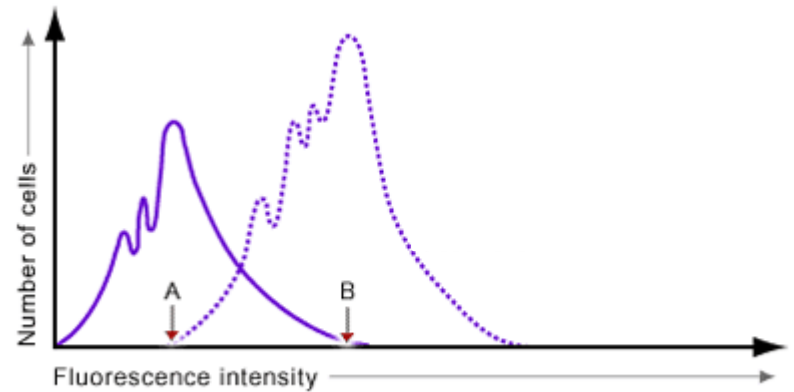


>30 colors



Typical current diagnostics

To:



- positive, negative, partially positive
- bright, dim, negative
- heterogeneous, homogeneous
- percentage of cells in positive area or in various intensity regions, positions of a median, mode(s) or a mean
- unimodal, bimodal, trimodal etc., skewness of the curve, presence or absence of a gap between cell subsets, etc.
- coexpression or mutual exclusivity, presence or absence of “empty spaces” etc.
- “strong” and “weak” positivity

FDE Code: typical examples

FDE: 52%, STRONG: CD11c, 13, 15, 33, 34, 38, 45, 65, HLA-DR, iMPO, WEAK: CD19, NEGATIVE: CD3, i3, 4, 7, 8, 10, 22, i79a; AML

FDE: 41%, STRONG: CD1a, 2, i3, 4, 7, 8, 45, iTdT, NEGATIVE: CD3, 10, 13, 14, 15, 19, 22, 33, 34, i79a, iMPO, TCRab, TCRgd; T-ALL T-III.

FDE: 12%, STRONG: CD7, 13, 33, 34, 45, 65, 117, WEAK: CD4, NEGATIVE: CD2, 3, i3, 8, 10, 14, 15, 19, 22, i79a, NOT EVALUATED: iMPO, iTdT; Pathological immature myeloid cell population.

Brief Communication

Flow Diagnostics Essential Code: A Simple and Brief Format for the Summary of Leukemia Phenotyping

Ondřej Hrušák,^{1*} Giuseppe Basso,² Richard Ratei,³ Giuseppe Gaipa,⁴ Drorit Luria,⁵ Ester Mejstříková,¹ Leonid Karawajew,³ Barbara Buldini,² Eti Rozenthal,⁶ Jean Pierre Bourquin,⁷ Tomáš Kalina,¹ Mary Sartor,⁸ and Michael N. Dworzak,⁹ on behalf of the AIEOP-BFM Flow Network

¹Department of Pediatric Hematology and Oncology, Charles University 2nd Faculty of Medicine and University Hospital Motol, Prague, Czech Republic

²Dipartimento di Salute della Donna e del Bambino, Padova, Italy

³Department of Pediatric Oncology/Hematology, Charité- Universitätsmedizin Berlin, Germany

⁴Laboratorio di Terapia Cellulare Stefano Verri, Monza, Italy

⁵Schneider Children's Medical Center, Pediatric Hemato-Oncology, Israel

⁶Hematology Institute, Sheba Medical Center, Tel Hashomer, Israel

⁷Division of Oncology and Children's Research Center, University Children's Hospital, University of Zurich, Zurich, Switzerland

⁸Department of Haematology, Westmead Childrens Hospital, Sydney, Australia

⁹Department of Pediatrics, St. Anna Children's Hospital and Children's Cancer Research Institute, Medical University of Vienna, Vienna, Austria; coordinator of the AIEOP-BFM Flow Network

FDE Code - Summary

- Very brief summary, similar to ISCN in cytogenetics
- Always says:
 - % malignant cells
 - Strong – Weak – Negative (– Not evaluated) antigens
 - diagnostic category
- To be used in clinical reports and databases
- Applicable in all cytometric investigations of malignant cells